

United Business Park

Shippensburg, PA

Name:	United Business Park
Availability:	Immediate
Address:	Exit 24, Interstate 81 Shippensburg, PA
County:	Franklin
Municipality:	Southampton Township
Zoning:	Industrial
Acreage:	350
Price:	Call for Details
Description:	Flat to rolling agricultural land with immediate access to Interstate 81. All public utilities available. Newly reconstructed Exit 24 Interchange and widened bridge work with traffic signals.
Natural Gas:	UGI Central Penn
Electricity:	Adams Electric
Public Sewer:	Cumberland Franklin Joint Authority
Public Water:	Shippensburg Borough Authority
Highways:	Immediate access to Interstate 81, Pa Exit 24. Easy access to I-76 & I-70
Rail:	10 miles from CSX Intermodal Terminal in Chambersburg
Contact:	David Sciamanna Cumberland Valley Regional Development Corporation (717) 264-7101 dsciamanna@chambersburg.org

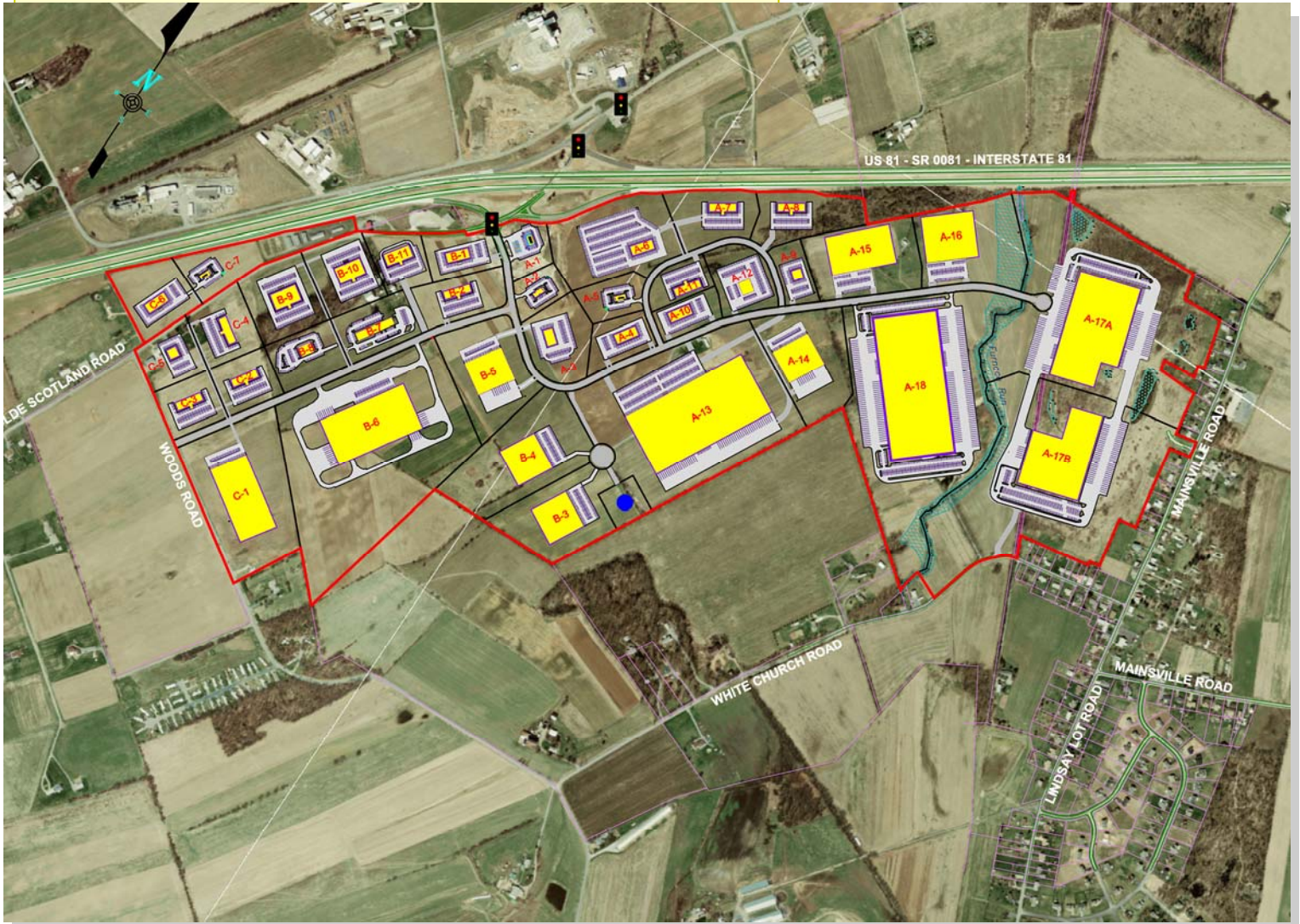


Prepared by:

Franklin County Area Development Corporation
1900 Wayne Road Chambersburg, PA 17202

United Business Park

Shippensburg, PA



Prepared by:

Franklin County Area Development Corporation
1900 Wayne Road Chambersburg, PA 17202
(717) 263-8282 (717) 263-0662 fax