

# United Business Park

Shippensburg, PA

<b>Name:</b>	<b>United Business Park</b>
<b>Availability:</b>	<b>Immediate</b>
<b>Address:</b>	<b>Exit 24, Interstate 81 Shippensburg, PA</b>
<b>County:</b>	<b>Franklin</b>
<b>Municipality:</b>	<b>Southampton Township</b>
<b>Zoning:</b>	<b>Industrial</b>
<b>Acreage:</b>	<b>350</b>
<b>Price:</b>	<b>Call for Details</b>
<b>Description:</b>	<b>Flat to rolling agricultural land with immediate access to Interstate 81. All public utilities available. Newly reconstructed Exit 24 Interchange and widened bridge work with traffic signals.</b>
<b>Natural Gas:</b>	<b>UGI Central Penn</b>
<b>Electricity:</b>	<b>Adams Electric</b>
<b>Public Sewer:</b>	<b>Cumberland Franklin Joint Authority</b>
<b>Public Water:</b>	<b>Shippensburg Borough Authority</b>
<b>Highways:</b>	<b>Immediate access to Interstate 81, Pa Exit 24. Easy access to I-76 &amp; I-70</b>
<b>Rail:</b>	<b>10 miles from CSX Intermodal Terminal in Chambersburg</b>
<b>Contact:</b>	<b>David Sciamanna Cumberland Valley Regional Development Corporation (717) 264-7101 <a href="mailto:dsciamanna@chambersburg.org">dsciamanna@chambersburg.org</a></b>

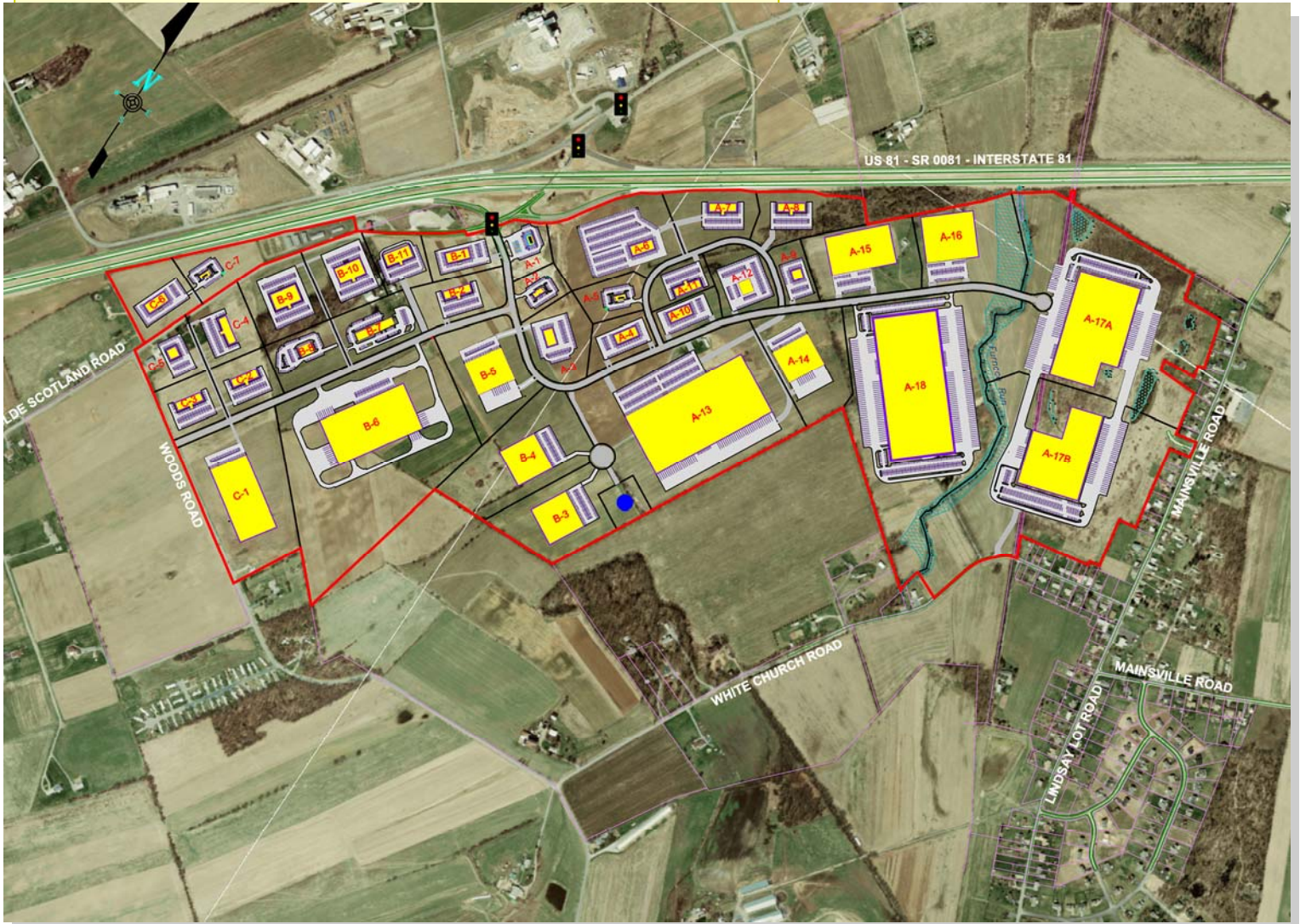


Prepared by:

Franklin County Area Development Corporation  
1900 Wayne Road Chambersburg, PA 17202

# United Business Park

Shippensburg, PA



Prepared by:

Franklin County Area Development Corporation  
1900 Wayne Road Chambersburg, PA 17202  
(717) 263-8282 (717) 263-0662 fax